

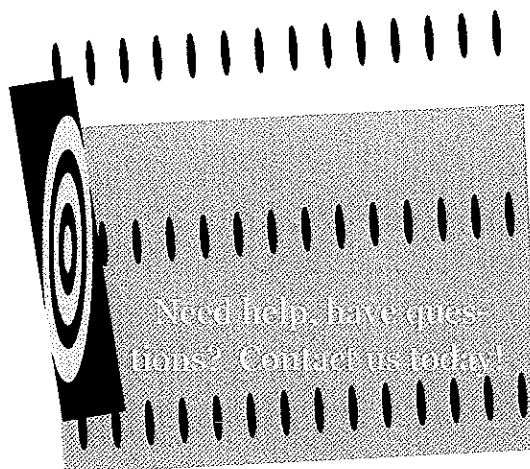
Introduction to Tolland's Curbside Recycling Project

Effective July 1, 2009

This pamphlet has been prepared to assist Tolland residents in disposing of their recycling materials. Conserving energy, our natural resources and cost containment are significant reasons for institution and management of a comprehensive solid waste and recycling program. Each ton of solid waste we can take out of the waste stream saves approximately 70 dollars a ton in disposal fees. Effective July 1, 2009 recyclable items should be placed in a blue Town issued rolling cart 18" from the curb or roadside, next to your green solid waste carton on your designated collection day. There is no need to separate recyclable items in the cart. Bulky waste, metal items and oils should be placed at curbside. Metal and bulky waste continue to be picked up the first full week of the month. To schedule this pick-up, you must call (800) 286-5335 or (860) 423-4527 four days prior to your normal pick-up days. Totes are the property of the Town of Tolland and it stays with the residence if you move. **Please remember recycling is a mandatory program, not a voluntary one!**


For questions on collection call:

Willimantic Waste-Customer Service
at
800-286-5335
or
860-423-4527




Town Hall Hours:
Mon-Wed: 8-4:30 pm
Thursday: 8-7:30 pm
Friday: Closed

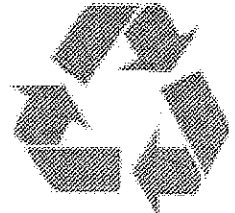
Call 871-3670 or
871-3699 for
Information on the
Town's Solid Waste/
Recycling Program



Tolland Recycles!



Tolland's Curbside Recycling Guide



Fun Facts about Recycling

- Americans generate 236 million tons of waste every year.
- Americans can save 193 million barrels of oil in one year by recycling aluminum cans.
- The average American creates 1.640 pounds of waste every year, which is 4.5 pounds per person, per day.
- Americans use around 2.5 million plastic bottles every hour, from laundry detergent to soft drinks.
- Each time we recycle around 2,400 of these bottles we conserve a cubic yard of landfill space.
- Americans throw away enough glass bottles and jars every two weeks to fill a 200-story office building.



**Newspapers
Magazines
Catalogs
Cardboard**



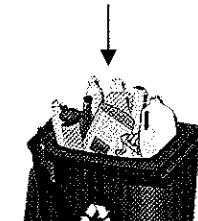
**Milk Cartons
Drink Boxes**



**Mixed Paper,
Scraps and
and Shredded
Paper**



**Plastic Tubes
and Bottles**



**Cans
(Aluminum and Tin)**

**Aluminum
(Foil, Cans and Pots
and Pans)**

Glass



**Motor Oil
(curbside)**

TOLLAND RECYCLING

DO'S

DON'TS

Include ads, inserts, postcards and miscellaneous paper. Flatten cardboard boxes.

Rinse to remove food particles.

Scrap paper includes: junk mail, envelopes, office paper, greeting cards, paper egg cartons, paper tubes, wrapping paper and cereal boxes. Place shredded paper into paper bags.

Tubs include: All plastics number 1-7. Rinse containers.

Includes all food and beverage containers. Cans must be clean and empty.

Remove food from all products

Place in carts, mix all colors together. Labels are okay.

Put in a clean plastic bottle (please mark oil on container), with a screw on lid and tape shut. Place next to cart, do not place inside cart.

Do not include rubber bands or plastic bags. Do not include wax-coated cardboard or pizza boxes.

Do not include plastic straws that come with drink boxes.

Do not include bath tissues, paper towels, freezer boxes, coffee cups or paper coated with food, wax, foil or plastic.

Do not include lids and bottles that have come in contact with motor oil, pesticides or herbicides.

Do not include plastic cups. Do not flatten or puncture cans remove nozzles.

Do not include light bulbs, broken glass or lids.